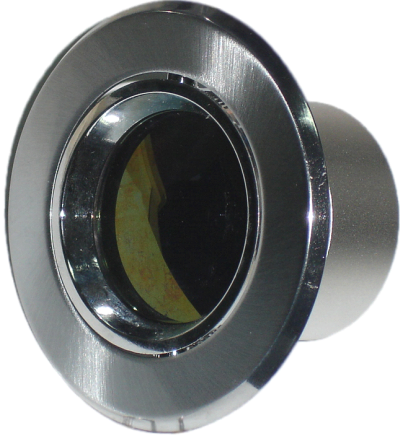


## **CEILING CAMERA**

CVTMIR



### ► FEATURES

- . Built-in Digital color CCD camera
- . High stability & reliability.
- . Easy installation and maintenance.
- . Stylish and elegant concept design.
- . Superior image quality

### ► SPECIFICATIONS

Model Number		CVTMIR
Scanning System	NTSC	520 lines 2:1 interlace
	PAL	520 lines 2:1 interlace
Scanning Frequency	NTSC	15,734Hz(H) , 60Hz(V)
	PAL	15,625Hz(H) , 50Hz(V)
Effective Pixels	NTSC	512(H) x 492(V)
	PAL	512(H) x 582(V)
Electronic Shutter	NTSC	1/60-100,000sec.
	PAL	1/50-100,000sec
Image Sensor Device		1/3" SONY CCD
Horizontal Resolution		420 TV lines
Min Illumination		0.5Lux
S/N Ratio		More than 48dB
Gain Control		Auto

BLC	Auto	
SYNC System	Internal Synchronization	
Lens/Focus point	3.6mm (Standard)	
Video Output	1.0 Vp-p, 75 Ohm	
Power Requirement (± 10%)	DC12V, 500mA	
Power Consumption (± 10%)	100mA	
Construction	Aluminum alloy housing	
Work condition	Operating: -10 ~ + 55 °C , Storage: -30 ~ + 70 °C , Humidity:0~95%RH	
Dimensions ( mm )	87.5(R) x 49(H)	
Weight ( N.W)	0.235kg	
<b>Note</b>	Design and specifications are subject to change without notice.	
<b>Warning</b>	<p>TO PREVENT FIRE OR SHOCK HAZARD, DO NOT EXPOSE THE UNIT TO RAIN OR MOISTURE.</p> <p>This equipment has been tested and found to comply with the limits for a class A digital device, pursuant to part 15 of the FCC Rules. These limits are designed to provide reasonable protection against harmful interference when the equipment is operated in a commercial environment. This equipment generates, uses, and can radiate radio frequency energy and, is not installed and used in accordance with the instruction manual, may cause harmful interference in which case the user will be required to correct the interference at his own expense.</p>	
<b>Caution</b>	<p>TO REDUCE THE ELECTRIC SHOCK, DO NOT REMOVE COVER, OR THE BACK, REFER TO QUALIFIED SERVICE PERSONNEL.</p> <p>TO PREVENT ELECTRIC SHOCKS AND RISK OF FIRE HAZARDS, DO NOT USE OTHER THAN SPECIFIED.</p> <p>Any changes or modification in construction on this device which are not expressly approved by the manufacturer should be responsible for in compliant operation with this manual.</p>	